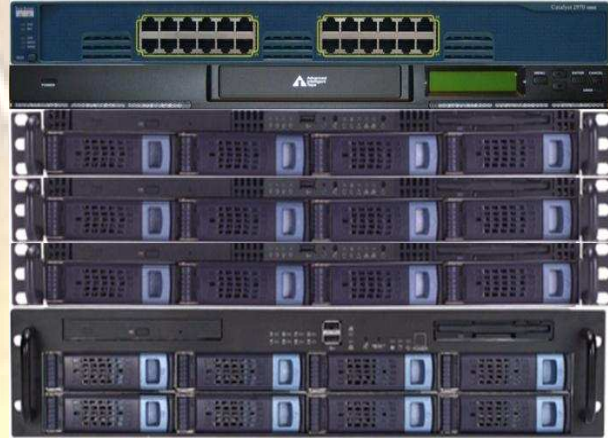




IASM 6100 Appliance

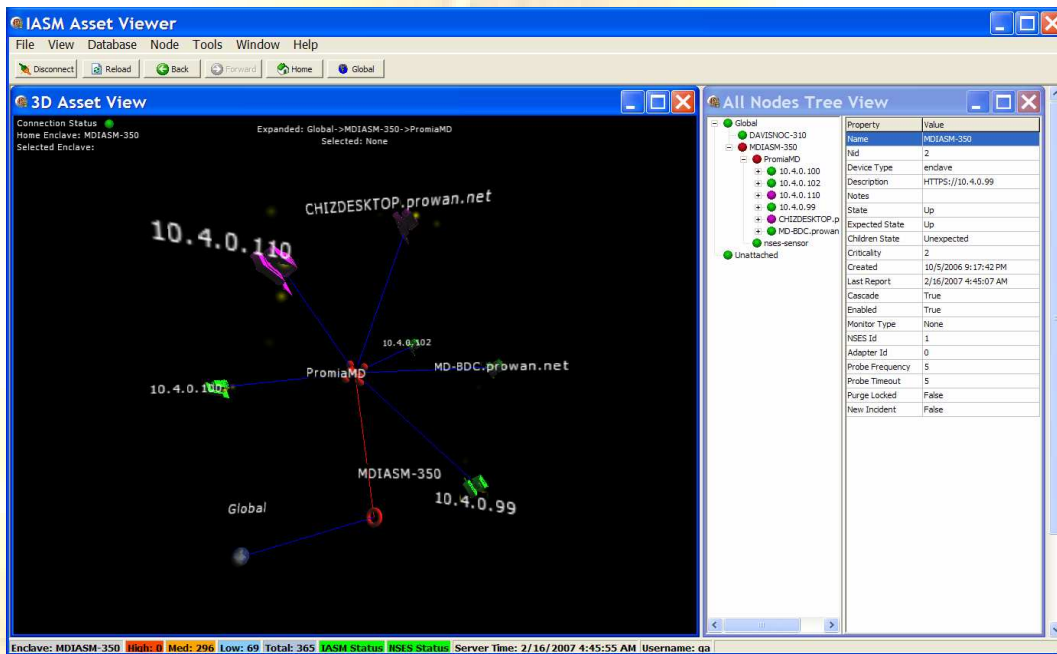
The IASM 6100 is a hardened Security Asset, Event, and Incident Management appliance that was developed in collaboration with, and is deployed throughout, the U.S. Navy Global Network Operating Centers (NOC's). The IASM 6100 appliance consists of 6 distinct hardware units. The first is the Manager unit, which implements both features for: identifying site-specific appropriate policy-driven responses, incident validation, and incident closure (after operator remediation of the problem) and the secure web-based IASM 6100 user interface for accessing those features. The second is the Sony Lib-81 AIT-3 tape archival unit, to which operators can archive 180+ days of old incidents. The third is the Analytics unit, which runs software that detects operational and security incidents that would not otherwise be visible from any single sensor. The software uses a unique combination of expert system and statistical aggregation and correlation algorithms to analyze events from multiple sensor sources. An additional result of the algorithms is a natural language description of the kind of incident detected. The fourth is the Network Security Event Sensor (NSES) unit, which currently has three network traffic sensors. One sensor passively identifies, fingerprints, and maps network assets while the second detects anomalous IP traffic – which often indicates previously unknown network attacks. The third sensor uses the Snort engine to compare network packets with “Bleeding Edge” attack signature patterns that have been developed the Snort community and independently tested by Promia. The NSES unit includes filters that use local knowledge to eliminate false positive events, aggregate consecutive instances of the same event, and filter events according to white- and black-lists of IP addresses. Finally, the NSES unit also can record 1-60 second "snapshots" of IP traffic both before and after a security event for later remote forensic review by skilled incident analysis personnel. The fifth is the Repository unit, which consolidates and stores the logged event records from many commercial NIDS, HIDS, firewalls, VPN appliances, routers, host operating systems, and software applications into a unified online repository. The event records are actually collected, filtered, and forwarded by intelligent IASM software agents that have been placed at strategic locations on the network. The sixth is a CISCO switch unit for interconnecting the appliance units and the protected network.





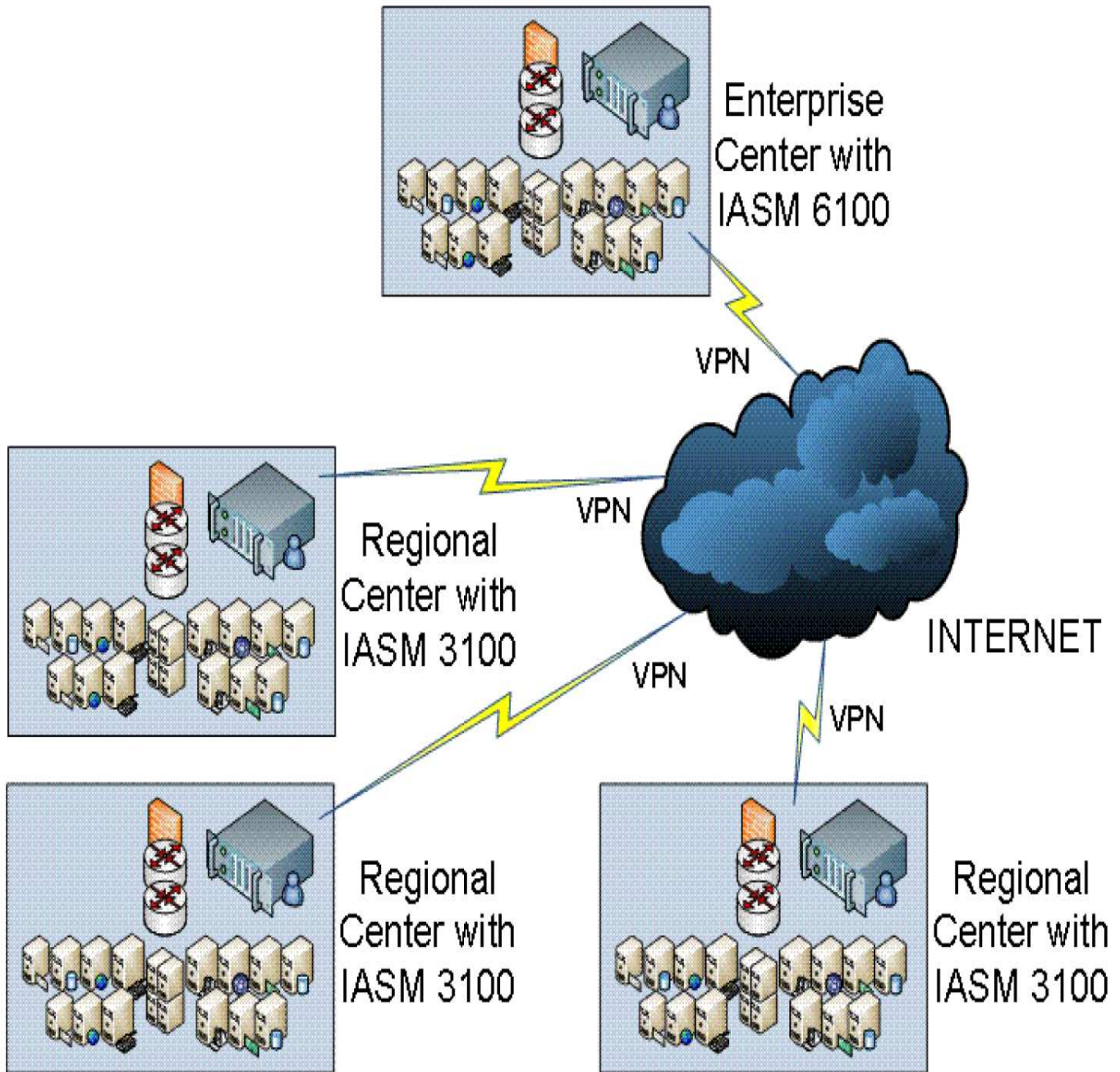
Promia Asset Viewer Graphical User Interface

The IASM 6100 comes with the Promia Asset Viewer GUI, shown below, which presents a flexible, powerful, 3-Dimensional, consolidated visualization of all assets and incidents on the monitored network. The AV shows versions and patch levels of node operating systems, device and application status, ports in use, and other related information. The AV enables an operator to navigate among multiple network segments being monitored by Promia NSES appliances, thus exposing the contextual relationship between those segments. The AV provides a real-time tactical status view of the IASM incidents and the operational status of the IASM and NSES appliances.



Enterprise-wide Security Management

The IASM 6100 Appliance is capable of monitoring and managing the security operations of a large, global, enterprise. While it can be deployed alone for network protection of a moderately large network, the IASM 6100 Appliance is most effective when used as the command and control center for a group of smaller IASM Appliances deployed at the regional or departmental level as shown in the diagram, below:





Promia IASM 6100 Appliance Technical Specifications

	IASM 6100 Manager Unit	IASM 6100 Analytic Unit
Enclosure	1U Rack mount SATA Server Case with 400W Power Supply and 4 SATA Hotswap drive bays	1U Rack mount SATA Server Case with 400W Power Supply and 4 SATA Hotswap drive bays
Processor	<ul style="list-style-type: none"> Dual single-core Opteron processors 	
Memory	<ul style="list-style-type: none"> 16GB ECC Registered SDRAM 	
Storage	<ul style="list-style-type: none"> 2 x 250GB RAID SATA drives 	<ul style="list-style-type: none"> 2 x 250GB RAID SATA drives
Interfaces	<ul style="list-style-type: none"> 2 x USB 2.0 2 x RJ45 for 10/100/1000 MBs Ethernet 	<ul style="list-style-type: none"> 2 x USB 2.0 2 x RJ45 for 10/100/1000 MBs Ethernet
Software Platform	<ul style="list-style-type: none"> Embedded Linux – security-hardened according to US DISA Linux STIG Sun Java Runtime Environment (for Linux) (Security-hardened according to US DISA JRE STIG) PostgreSQL (Security-hardened according to US DISA database STIG) 	
Proprietary	<ul style="list-style-type: none"> Promia IASM Core Services Promia Asset Viewer 	<ul style="list-style-type: none"> Promia IASM Analytic services

	IASM 6100 NSES Unit	IASM 6100 Repository Unit
Enclosure	1U Rack mount SATA Server Case with 400W Power Supply and 4 SATA Hotswap drive bays	2U Rack mount SATA Server Case with 460W Power Supply and 8 SATA Hotswap drive bays
Processor	<ul style="list-style-type: none"> Dual single-core Opteron processors 	
Memory	<ul style="list-style-type: none"> 16GB ECC Registered SDRAM 	
Storage	<ul style="list-style-type: none"> 2 x 250GB RAID SATA drives 	<ul style="list-style-type: none"> 8 x 250GB RAID SATA drives
Interfaces	<ul style="list-style-type: none"> 2 x USB 2.0 6 x RJ45 for 10/100/1000 MBs Ethernet 	<ul style="list-style-type: none"> 2 x USB 2.0 2 x RJ45 for 10/100/1000 MBs Ethernet
Software Platform	<ul style="list-style-type: none"> Embedded Linux – security-hardened according to US DISA Linux STIG Sun Java Runtime Environment (for Linux) (Security-hardened according to US DISA JRE STIG) PostgreSQL (Security-hardened according to US DISA database STIG) 	
Proprietary	<ul style="list-style-type: none"> NSES Core 	<ul style="list-style-type: none"> Promia IASM Multi-collector services

IASM 6100 Tape Archival Unit	IASM 6100 Network Switch Unit
<ul style="list-style-type: none"> Sony Lib-81 AIT-3 Tape Archive System 	<ul style="list-style-type: none"> CISCO 24-port switch

For more information, please contact:

PROMIA, Inc 415-536-1600 (Phone)

160 Spear Street, Suite 320 415-536-1616 (Fax)

San Francisco, CA 94105 sales@promia.com

www.promia.com